

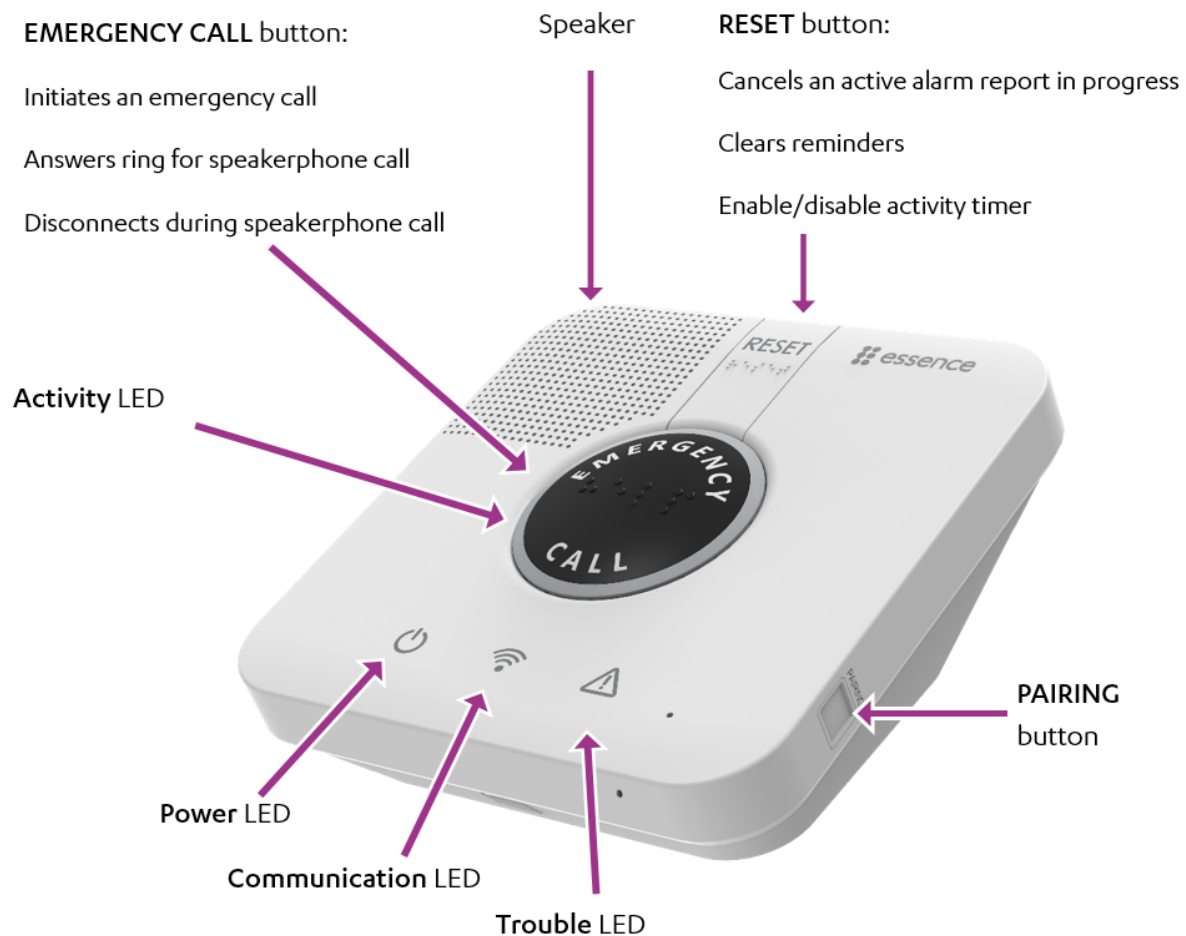


Sapio Link

User Setup Guide

1. Overview

The Sapio Link™ Control Panel (CP) is a connected, emergency-response control device, used for personal emergency applications. The CP is designed to monitor people living at home or in an assisted-living facility. The CP interfaces with the Sapio Link sensor devices, collects information about the resident's daily activities, and transmits the information to the monitoring station.



The CP includes a high-volume speaker, and a sensitive microphone. The **EMERGENCY CALL** and **RESET** buttons on the CP, include molded and raised braille characters, for ease of recognition by visually impaired residents.

2.0 Installing the CP

Installing the CP includes the following:

- Determining the best location for the CP
- Necessary Items
- Setting up the CP

2.1. Determining the Best Location for the CP

Survey the premises to determine the best location for the CP. It is recommended that you install the CP installation in either the **living room** or the **master bedroom**, in a location which is:

- Central within the premises
- Provided with sufficient cellular reception
- For a **PSTN** model, near an operating telephone jack
- Convenient for the resident to access, yet not where the CP would attract attention from unauthorized users
- Where the CP speakerphone can be heard throughout the premises
- Away from concrete walls to eliminate radio frequency (RF) interference
- Away from metal obstructions
- At least 2 m (6 ft.) from the peripheral devices

2.2. Necessary Items

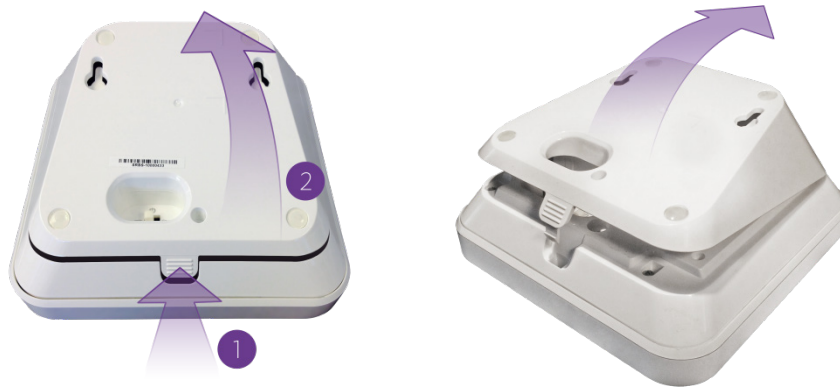
Ensure you have the following:

Cellular Model	PSTN Model
<ul style="list-style-type: none">■ Rechargeable backup battery■ Power adapter■ SIM card – from the cellular service provider	<ul style="list-style-type: none">■ Rechargeable backup battery■ Power adapter■ PSTN telephone jack dedicated to the CP■ PSTN telephone cable for the CP

2.3. Setting Up the CP

To set up the CP:

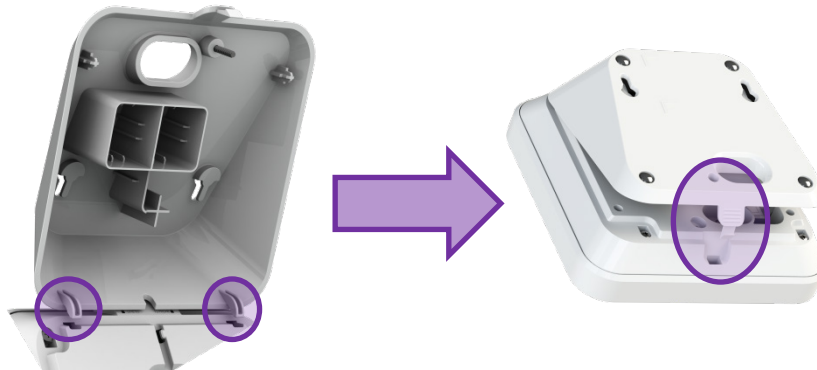
1. Ensure the power switch is in the **OFF** position.
2. Push the ribbed tab at the bottom of the back cover, and lift the cover off.



3. Plug-in the power adapter connector into the CP power socket, securing the cable under the tab.



4. Replace the back cover.



5. For the **PSTN** model, connect the CP to the landline.

Two PSTN phone sockets (RJ-11) are provided on the back of the CP PSTN model:



- i. Connect the phone cable between the **LINE IN** socket and the home phone jack. The telephone cable used should be at least of 26 AWG.
 - ii. Optionally, you can connect a telephone to the **TO PHONE** socket, using the cable included in the Sapiro Link PERS kit.
6. Move the power switch to **ON**. The CP switches to **Stand By** mode. In this mode:



The **Power** LED is green.



The **Communication** LED is red.








In some cases, such as when the CP is pre-configured, the ring around the **EMERGENCY CALL** button is blue.

The cellular model of the CP now tests to confirm communications between the CP and the Sapiro Link server.

When communication is established, the **Communication** LED is green.

3.0 CP LEDs

Table 3: CP LEDs

LED	Display	Description
Power	 Green	<ul style="list-style-type: none"> ■ ON – AC power connected ■ Blinking – Battery operation ■ OFF – No power or in sleep mode
Communication	 Green	<ul style="list-style-type: none"> ■ ON – Communication available ■ Blinking – Active transmission
	 Red	<ul style="list-style-type: none"> ■ ON – Communications failure: <ul style="list-style-type: none"> ● Cellular version: no SIM card, loss of cellular network, or GSM connectivity test failed ● PSTN version: PSTN line unavailable ■ Blinking – Blocked transmission
	 Orange	<ul style="list-style-type: none"> ■ ON – An active voice window following an emergency call ■ ON – GSM connectivity test is running
RESET	RESET Orange	<ul style="list-style-type: none"> ■ ON (for three seconds) – Button pressed
Trouble	 Red	<ul style="list-style-type: none"> ■ ON and CP beeps – CP or peripheral malfunction, or lost communications with the monitoring station ■ Blinking and CP beeps – Peripheral supervision lost or low battery power <p>NOTE: To stop the beeps, press RESET</p>
Activity Timer	 Blue ring	<ul style="list-style-type: none"> ■ ON – Activity timer is on ■ OFF – Activity timer is off ■ Blinking – Activity timer expires in less than 15 minutes
EMERGENCY CALL	 Red	<ul style="list-style-type: none"> ■ ON – Message acknowledged ■ Blinking – Alert in progress

Certifications

Environmental Management System Certificate

ISO 14001:2015

Certification Number: EMS40776

Quality Management System Certificate

ISO 9001:2015

Certification Number: QMS40977

Occupational Health & Safety Management System Certificate

OHSAS: 18001:2007

Certification Number: HSM40772

ASIAL Certification of Compliance

Newcastle Monitoring Centre

Certificate Number: 490B

West Ryde Monitoring Centre

Certificate Number: 504A

QLD Security License

License Number: 3709952

ACT Security Master License

License Number: 17502283

NSW Security Master License

License Number: 000101018

NT Security Master License

License Number: 348SFL

SA Security Master License

License Number: 262413